

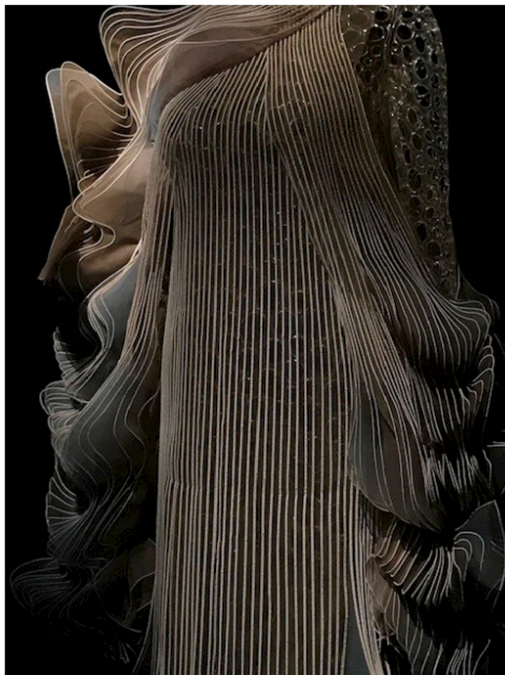
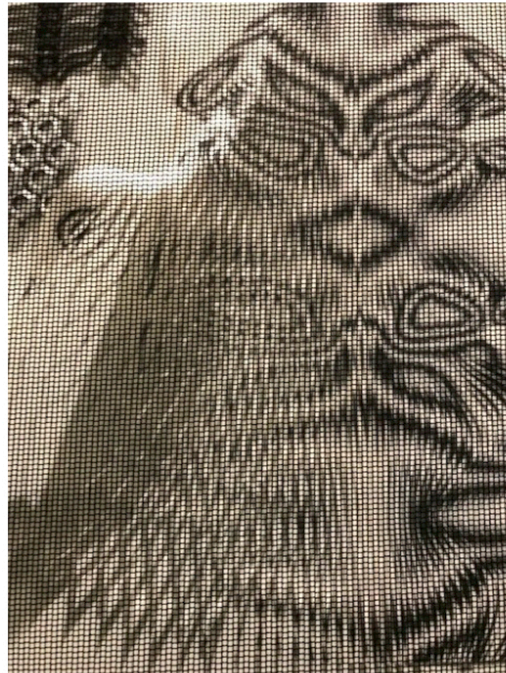
* BE INSPIRED

SATAB COLLECTION AUTUMN WINTER 25-26

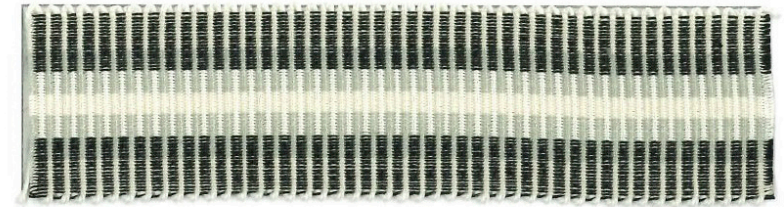


satab

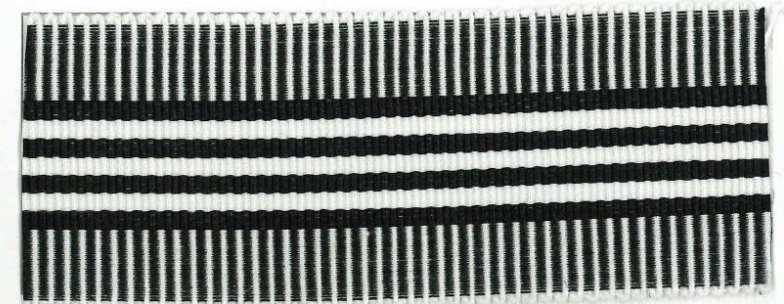
Movement



THE CREATIVES



Ref : 1117 - Col : 5 - 25 mm



Ref : 7034 - Col : 800 - 38 mm



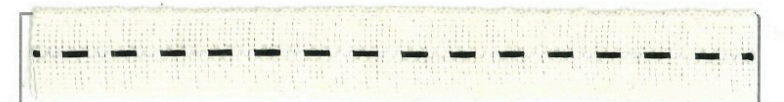
Ref : 4490 - Col : 800 - 6 mm



Ref : 1719 - Col : 800 - 10 mm

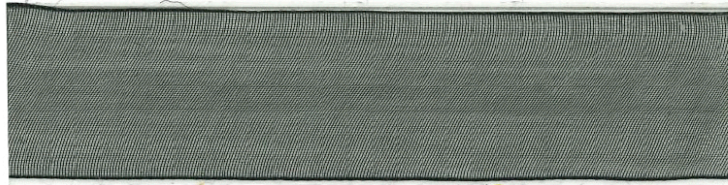


Ref : 0846 - Col : 272 - N°14

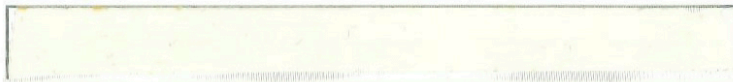


Ref : 3012 - Col : 6 - 12 mm

THE ESSENTIALS



Recycled polyester - Ref : 0508 - Col : 233 - 25 mm



Ref : 0494 - Col : 245 - 10 mm



Ref : 0107 - Col : 2 - 15 mm



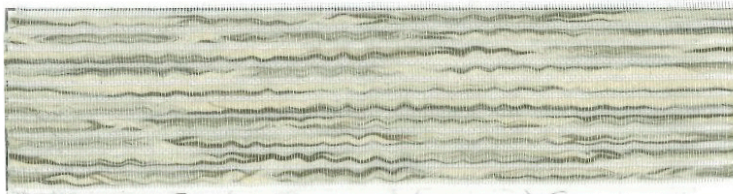
Ref : 7324 - Col : 801 - 14 mm



Ref : 0172 - Col : 5 - 5 mm



Ref : 0427 - Col : 1 - 10 mm



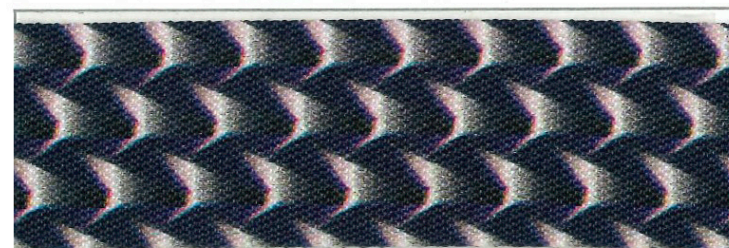
Ref : 1348 - Col : 8 - 25 mm

Structure

THE CREATIVES



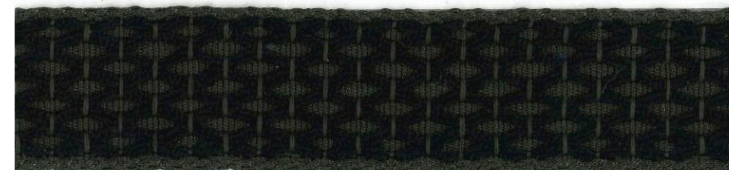
Ref: i778 - Col: 1 - 30 mm



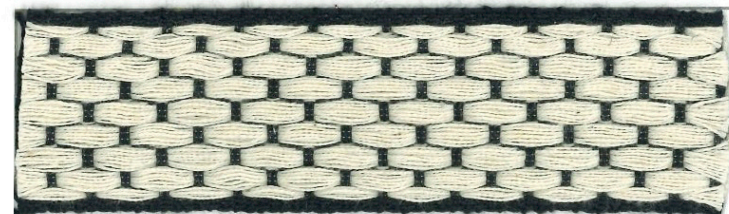
Ref: i779 - Col: 1 - 30 mm



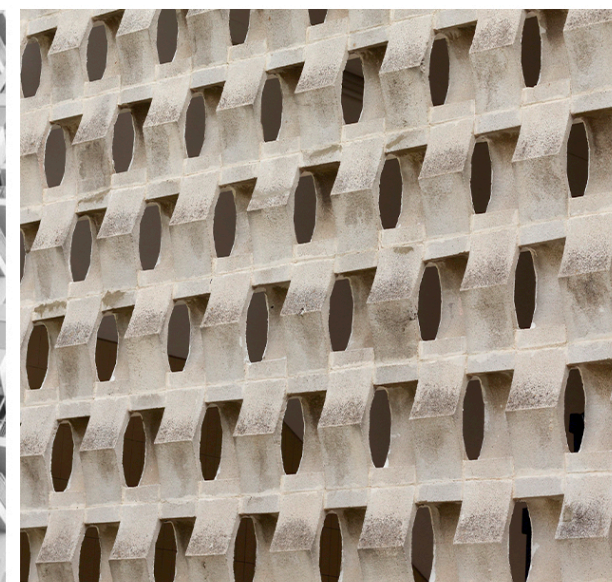
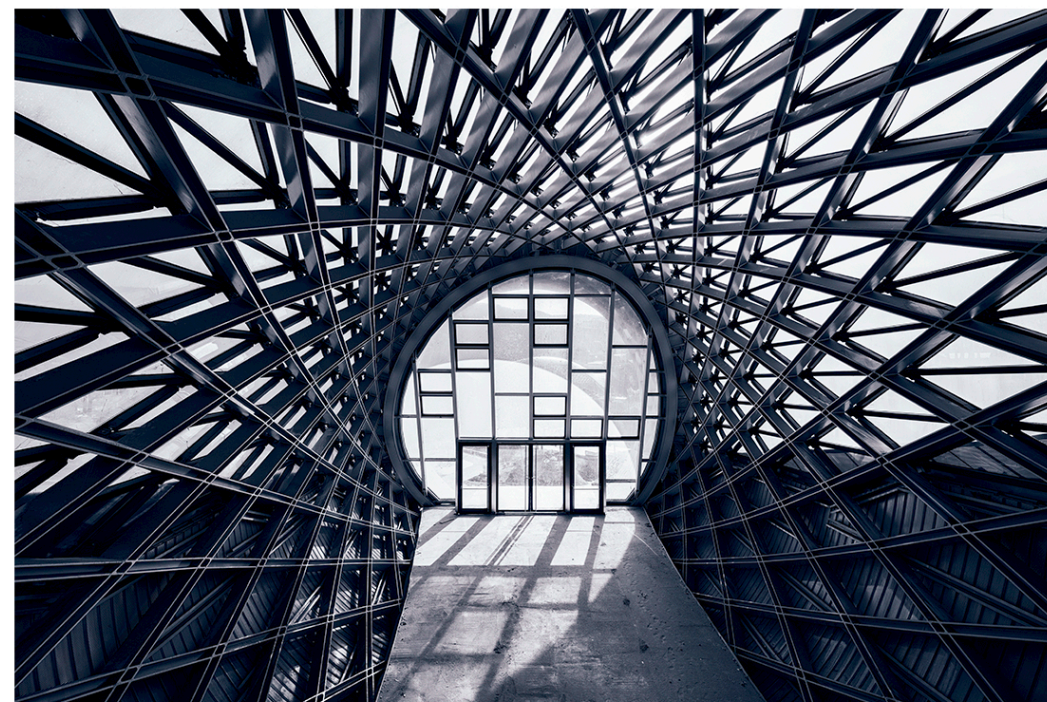
Ref: 7461 - Col: 1 - 34 mm



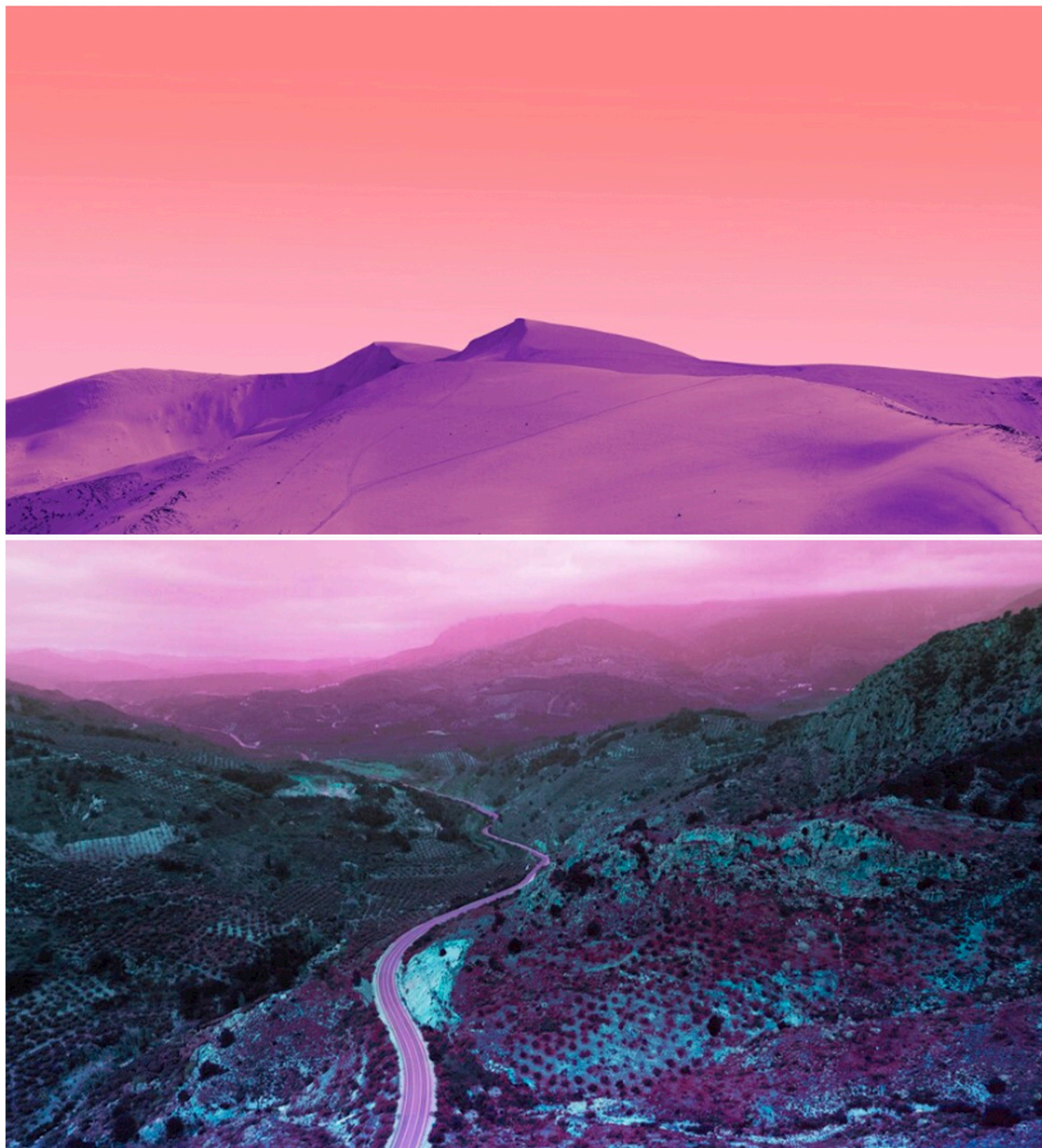
Ref: 7341 - Col: 446 - 22 mm



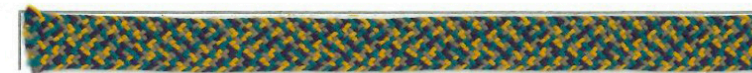
Ref: 7263 - Col: 800 - 25 mm



Purple harmony



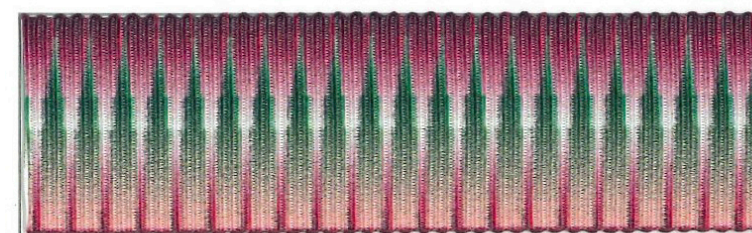
THE CREATIVES



Ref: 4457 - Col: 12 - 8 mm



Ref: 4457 - Col: 19 - 8 mm



Ref: i766 - Col: 4 - 30 mm



Ref: i753 - Col: 1 - 30 mm



Ref: 0916 - Col: 973 - 2 mm



Ref: i708 - Col: 300 - 15 mm



Ref: 7333 - Col: 268 - 25 mm

THE ESSENTIALS



Ref: 7351 - Col: 811 - 36 mm



Ref: 0070 - Col: 279 - 25 mm



Ref: 0072 - Col: 286 - 15 mm



Ref: 7249 - Col: 232 - 15 mm

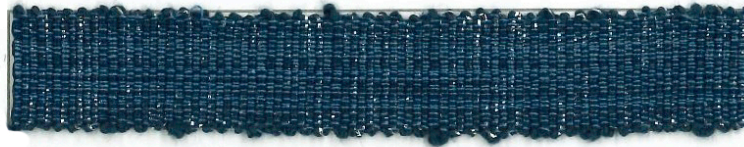


Ref: 1084 - Col: 268 - 35 mm

THE ESSENTIALS



Ref : 0422 - Col : 319 - 25 mm



Ref : 7432 - Col : 225 - 15 mm



Ref : 1822 - Col : 329 - 5 mm



Ref : 2805 - Col : 279 - 16 mm



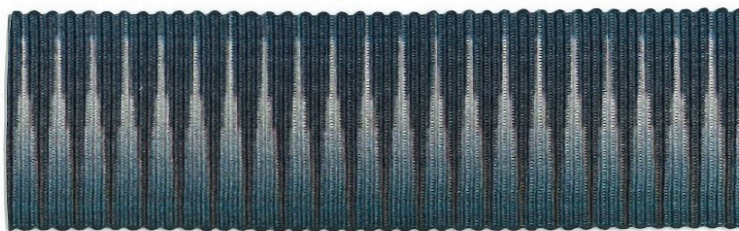
Ref : 2823 - Col : 424 - 25 mm




Ref : 3800 - Col : 245 - 16 mm


Tormented

THE CREATIVES



 Ref: i766 - Col: 3 - 30 mm



 Ref: 7209 - Col: 361 - 10 mm




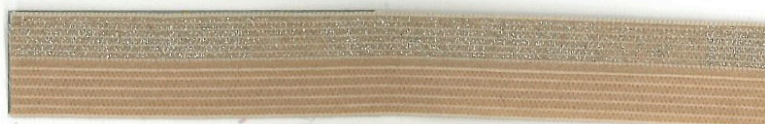
Ref: 7408 - Col: 279 - 12 mm




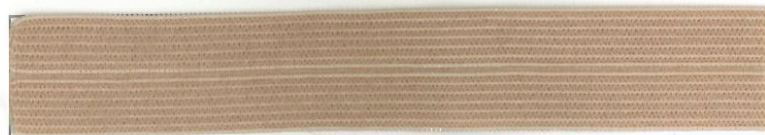
Ref: 4023 - Col: 805 - 6 mm




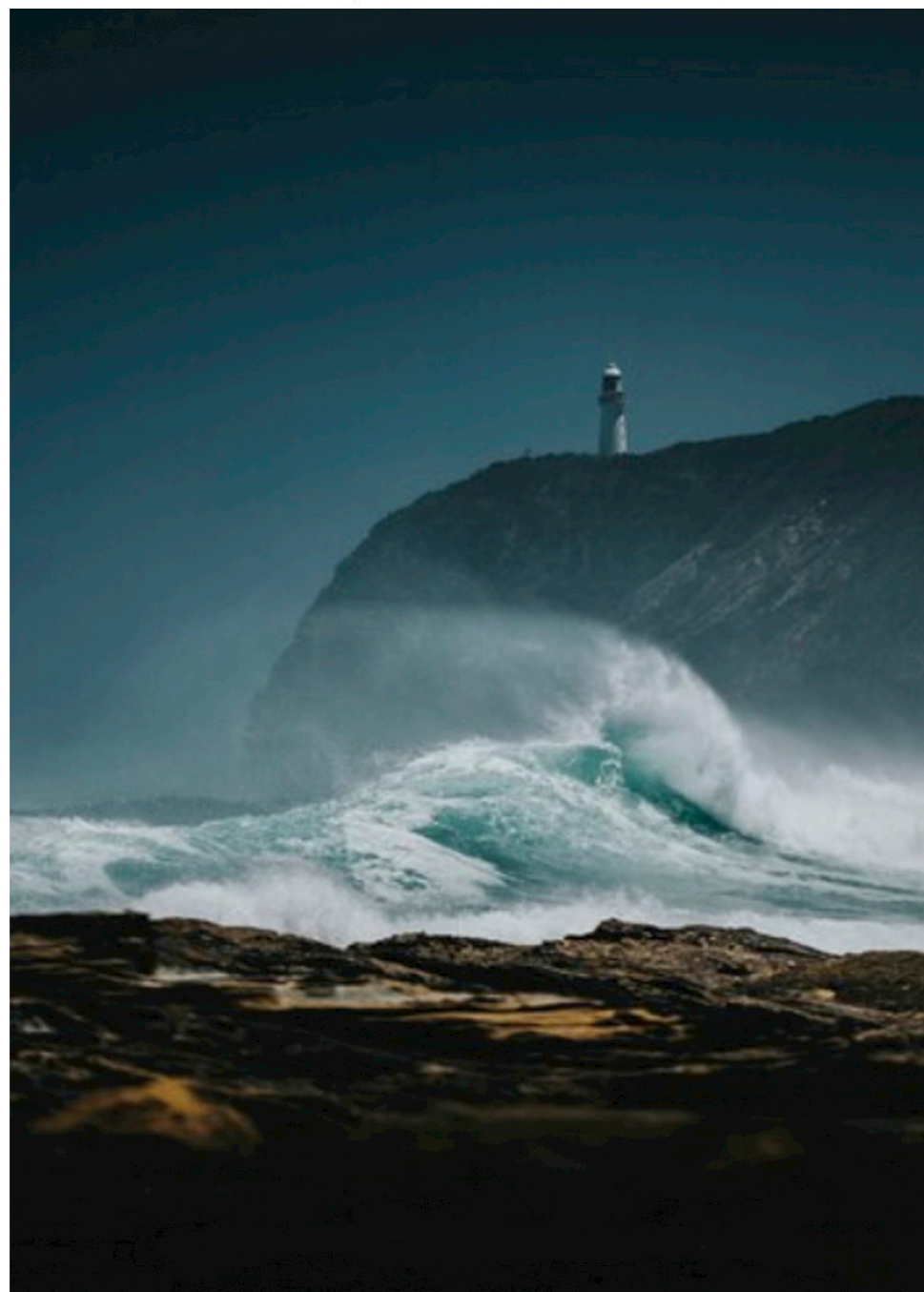
 Ref: 1981 - Col: 462 - 10 mm



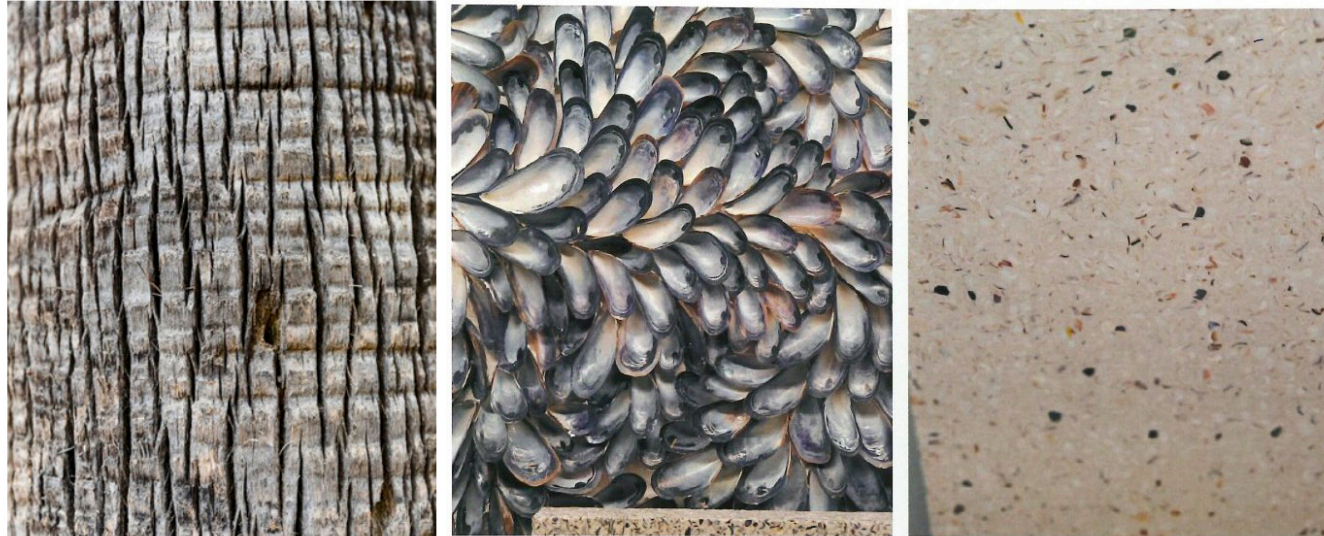
 Ref: 1985 - Col: 462 - 14 mm



 Ref: 1984 - Col: 462 - 18 mm



Composite material



THE CREATIVES



Ref: 7286 - Col: 2 - 14 mm



Linen MOL - Ref: 0078 - Col: 622 - 15 mm



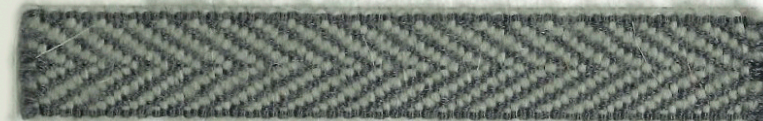
Ref: 4480 - Col: 6 - 8 mm



Ref: 7248 - Col: 201 - 15 mm



Ref: 7201 - Col: 1 - 15 mm

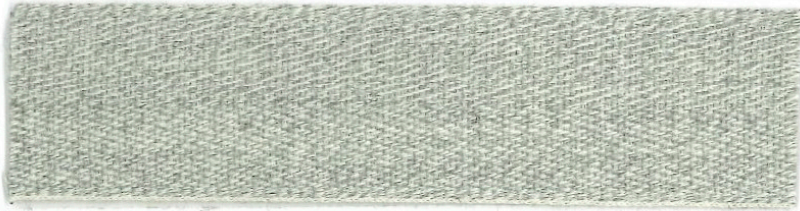


Ref: 7202 - Col: 238 - 17 mm

THE ESSENTIALS



Ref: 4427 - Col: 534 - 12 mm



Ref: 6460 - Col: 528 - 25 mm



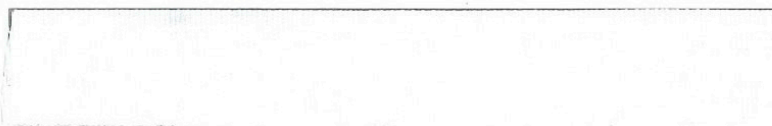
Recycled Cotton - Ref: 0088 - Col: 272 - 15 mm



Recycled Polyester - Ref: 3315 - Col: 233 - 15 mm



Recycled Polyester - Ref: 0790 - Col: 233 - 15 mm

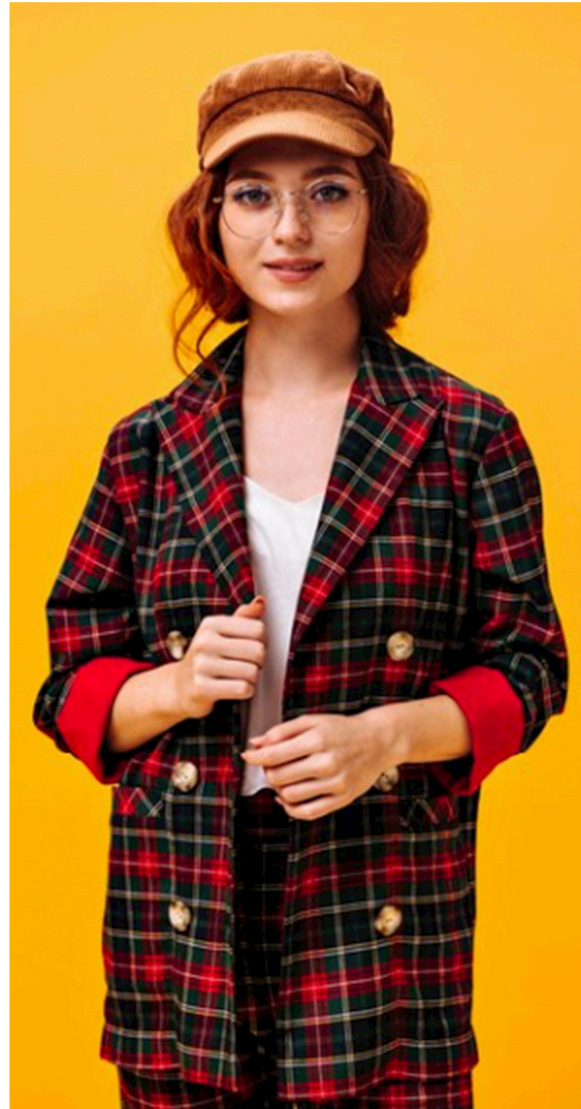


Recycled Polyester - Ref: 0048 - Col: 201 - 15 mm

DISRUPTIVE

Preppy kitsh

THE CREATIVES



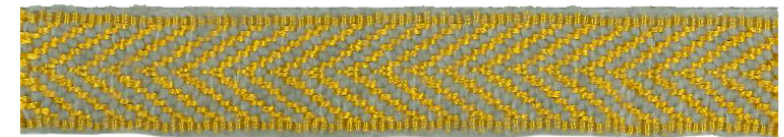
Ref : 7142 - Col : 803 - 10 mm



Ref : 7462 - Col : 5 - 34 mm



Ref : 7201 - Col : 8 - 15 mm



Ref : 7202 - Col : 2 - 17 mm



Ref : 4480 - Col : 7 - 8 mm



Ref : i777 - Col : 2 - 28 mm

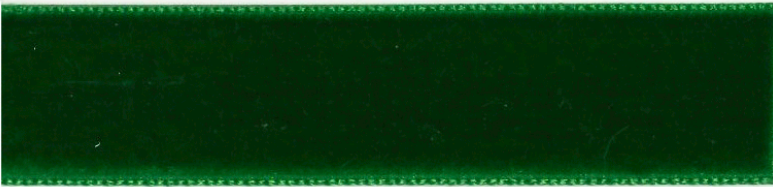
THE ESSENTIALS



Ref: 3079 - Col: 385 - 22 mm



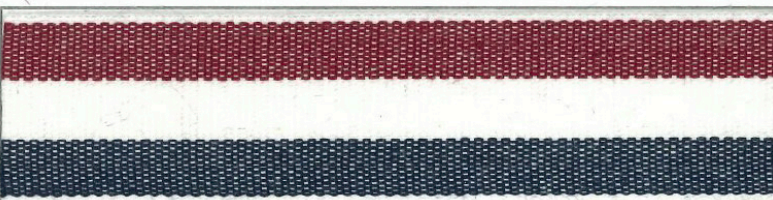
Ref: 4435 - Col: 281 - 4 mm



Ref: 0150 - Col: 229 - 23 mm



Ref: 7117 - Col: 950 - 50 mm



Ref: 3082 - Col: 950 - 25 mm